



**LANGUEDOC**

**BORIE la VITARELE**

**SAINT CHINIAN**

Appellation d'Origine Contrôlée

**LES TERRES BLANCHES**

50% Grenache

45% Syrah

5% Mourvèdre

16 Hectares (38.56 Acres) – 8 Hect. (19.28 Acres) devoted to **Les Terres Blancches**

Hand harvested

12 months aging in tanks (Grenache) and oak casks (Syrah)

Vintage(s) on sale: **2009**

**ORGANIC**

**Specifications:**

**Limited supply!**

A fantastic story on both the culture and vinification process!

Created in 1990 by **Cathy & Jean-Francois IZARN**, **Domaine BORIE la VITARELE** encompasses a 16 hectares (38.56 acres) vineyard within the garrigues and pine forest around the tiny village of Causses & Veyran, 12 miles north of Beziers and 10 miles northeast of Saint-Chinian. From the very beginning of their recent but very successful venture into producing Saint-Chinian wines, **Cathy & Jean-Francois** wished to respect their environment -- well before it became a fashionable, marketable idea. They only consider that their job was to "express the essences of the fruits the earth is feeding"!

The vines devoted to **Les Terres Blancches** are planted on limestone and clay soils on top of fractured clayey marls sub-soils, very specific to the Causses and Veyran area, allowing a good rooting of the vines' stocks. The culture and vineyard are totally **Certified ORGANIC**. With vines tied up and ploughed, use of Cordon de Royat method of pruning, green covering in wintertime with compost and biodynamic preparation provision made of horsetail, nettles, rosemary, etc. The yields do not exceed 40 hl/ha for the Grenache and 20 hl/ha for the Syrah and Mourvèdre, and this, along with the ultimate care, help the vines to reach the best phenolic maturity. Hand-harvesting in small baskets (12kilos max) of each separated plot, after a first selection within the vineyard. The grapes are 90% de-stemmed, brought to vats by gravity to avoid pumping and damage to the berries before being crushed in open vats to allow treading! Only natural yeasts are used. Twelve-month aging on lees with maximum two rakings: in concrete tanks for the Grenache and in 500-liter oak casks for the Syrah. A single bottling at the estate is done with no fining, and light filtration only if necessary. **Cathy and Jean-Francois IZARN** humbly think it is just a question of *expressing the essence of nature!* We call this a fabulous and hard job from these extremely talented "Artisans Vignerons." It results in extremely clean, dense and astonishing **Saint-Chinian** -- made in short supply!

**BORIE la VITARELLE Vineyard**

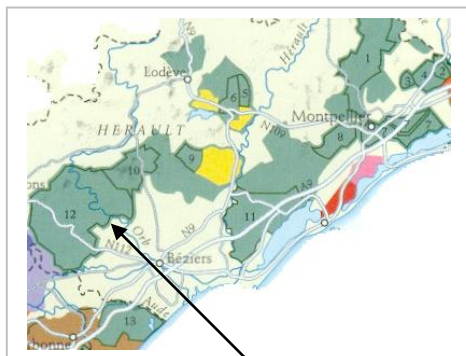
**Jean-Francois IZARN**



LA BORIE  
VITARELE



Les Terres Blancches



**Saint-Chinian**  
Area of Production

**HIGHLIGHTS**

**Terroir:** Limestone, clay, on marl sub-soils.

**Characteristics:** 2009 **Les Terres Blancches**

Great nose on dark ripe fruits, providing a round and sappy wine, structured and intense. Very attractive, straight and tonic.

« A juicy red, offering plenty of raspberry, cherry and currant flavors that are focused and lively. The crisp finish features iron and spices notes. »

**88pts** – Kim **MARCUS Wine Spectator**  
Oct.15th 2010 Issue

**Press Review:** **PARKER's 2009 Wine Bargains Guide - World's Best Wine Values under \$ 25.00**